



SASH Newsflash

January 2023

In This Edition

- Test yourself with two Case Challenges
- SASH Bladder & Kidney Centre
- SASH Team Update
- SASH Alexandria Update
- SASH Continuing Education
- Did you know?

As we start a new year, from all of us at SASH, we would like to thank you for your continued support. SASH recently celebrated our 15th birthday. In that time, we have treated almost half a million patients. None of this would be possible without our valued referring veterinarians.

2023 brings many exciting announcements and updates we would like to share with you, as well as the first quiz in our case challenge series.

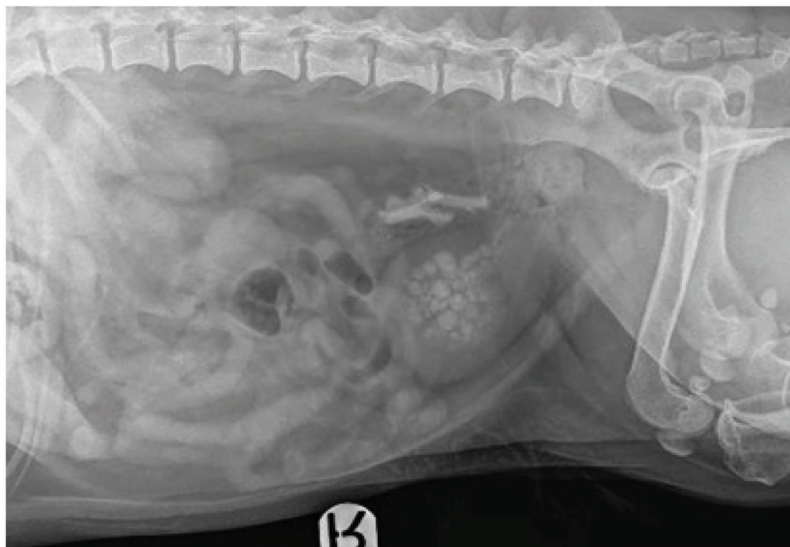


Helping pets and their families live their best life

SASH Clinical Case Challenge



Below are two case challenges. Scan the QR code to login or register for the SASH Academy to reveal the answer. Once you've guessed the answer, you'll unlock some invaluable case notes.



Case Challenge 1



A 5-year-old FS Cavoodle presented for pollakiuria and stranguria.

On physical examination, the urinary bladder was small in size. No other abnormalities were identified. Abdominal radiographs were performed.

Based on the radiographic appearance of the uroliths, what is the most likely mineral type?

- a. Calcium oxalate
- b. Struvite
- c. Urate
- d. Cystine

Case Challenge 2



An 8-year-old MC Poodle cross presented for stranguria. The dog has a history of calcium oxalate urolithiasis requiring cystotomy. Urinalysis showed urine pH 6.0 and urine culture was negative. Abdominal radiographs were performed. What would be the best way of managing these uroliths?

- a. Retropulse the uroliths to the urinary bladder, then perform cystotomy
- b. Urethrotomy to retrieve the uroliths
- c. Cystoscopy with laser lithotripsy to fragment the uroliths, then remove their fragments and other smaller uroliths
- d. Medical dissolution





SASH Bladder & Kidney Centre

The SASH Bladder & Kidney Centre at North Ryde is the hospital's newest centre of excellence. Aiming to offer comprehensive, state-of-the-art care to dogs and cats with lower and upper urinary tract disease, the SASH Bladder & Kidney Centre is led by internal medicine and surgery specialists, in combination with specialists in anaesthesia, diagnostic imaging, critical care and pathology.

New advanced procedures being offered through the SASH Bladder & Kidney Centre include minimally invasive procedures for lower urinary tract disease such as laser lithotripsy, cystoscopic-guided laser ablation of ectopic ureters, and extracorporeal therapies such as haemodialysis for AKI and therapeutic plasma exchange for certain toxicities and IMHA.

Although the SASH Bladder & Kidney Centre is new, its team consists of specialists with years of clinical experience.



Dr Lucy Kopecny, Specialist in Internal Medicine completed a fellowship in nephrology, interventional endourology and extracorporeal therapies at UC Davis, California. She is currently one of approximately 20 individuals globally and the only person in Australia who has completed this advanced study under the mentorship of Drs Carrie Palm and Larry Cowgill, two global leaders in nephrology and urology. Over the years, Lucy has performed over 100 extracorporeal treatments and dozens of nephrology/urinary interventions.

Dr Julia Sumner, Specialist in Surgery was an Associate Professor of Small Animal Surgery at Cornell University, a well-established centre of excellence in interventional radiology and endoscopy. While at Cornell, Julia performed over 100 nephrology/urinary interventions and spent time teaching these valuable skills to junior veterinarians.



Familiarise yourself with the indications for conditions that can be treated at the SASH Bladder & Kidney Centre by watching these webinars on SASH Academy



**Dialysis &
Extracorporeal
Therapies**



The Leaky Bladder

SASH Team Update

SASH is rapidly growing, with new team members joining all the time. We would like to introduce the latest additions to the SASH family.



Dr Erin Bell
*BVSc BSc (Vet) MVSc FANZCVS
DECVIM*
Specialist in Internal Medicine,
SASH Western Sydney



Dr Iris Chan
MA VetMB MRCVS
Internal Medicine Registrar,
SASH North Ryde



Dr Mara Hickey
DVM, DACVECC
Specialist in Emergency
& Critical Care, SASH
Western Sydney



Dr Aaron Koey
BVSc
Emergency Clinical Lead,
SASH Western Sydney



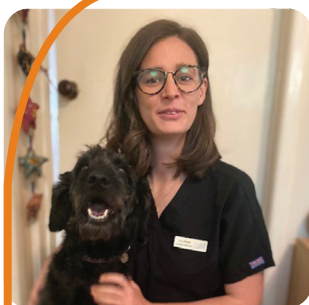
Dr Alex Swan
BVetSc (Hon)
Emergency Clinical Lead,
SASH Western Sydney



Dr Jack Neville-Towle
*BVSc (Hons), MPhil, MVS,
MANZCVS, DECVS*
Specialist in Surgery, SASH
Western Sydney

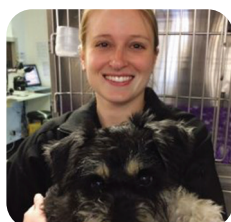


Dr Chris Sun
*BVSc GCert(ECC) MANZCVS
MVS MPhil MRCVS*
Registrar in Anaesthesia, SASH
North Ryde & Western Sydney



In the Spotlight: Dr Lucy Barker
BVMBVS, BVMedSci, PGCert, MSc, DECVIM
Specialist in Internal Medicine, North Ryde & Western Sydney

Lucy completed her degree in Veterinary Medicine in 2014 at the University of Nottingham, UK. She worked in the UK in general practice for a short period before starting an internship at the University of Nottingham. Lucy then completed her residency in internal medicine at the University of Bristol before relocating to Sydney. Lucy has a particular interest in immune-mediated and liver diseases.



In other team news, we would like to congratulate Dr Johanna Todd, previously a SASH oncology resident, who has now become a Registered Specialist in Oncology.



We wave a temporary goodbye to Dr Philippa Ravens (Dermatology) and Dr Bing Yun Zhu (Internal Medicine) as they take parental leave. Finally, we say farewell to Dr Johana Premont (Ophthalmology), who has relocated to Queensland with her family.

Coming in 2023

Soon we will welcome back Dr Erin Mooney, Specialist in Emergency & Critical Care who will rejoin the SASH team in February 2023. Dr Erin will be accompanied by a new team of ECC residents.



We are also excited to announce a new addition to the SASH Cancer Centre team, with Dr Sarah Wetzel, Oncology Registrar arriving at SASH North Ryde in January 2023 to support the rapidly growing demand in oncology.

Dr Katy Townsend, DACVS Boarded Surgeon from Oregon State University will be joining the SASH Central Coast team from January to June 2023.



Dr Chris Tan, Specialist Surgeon and partner at SASH Alexandria will join the North Ryde Hospital from February 2023.

Hospital Tours



Scan to book a tour
for North Ryde

Come for a tour at either North Ryde or Western Sydney Hospital.

We can accommodate group bookings for your whole practice to visit our hospital.



Scan to book a tour
for Western Sydney

SASH Alexandria



The SASH Alexandria site has been secured and building has commenced!

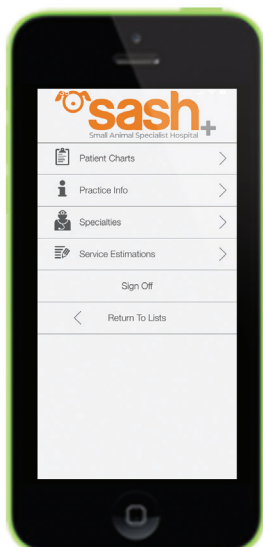
We are on track for our new state-of-the-art hospital to open in mid 2023.

Alexandria partners Dr Jack Neville-Towle and Dr Erin Bell, are currently working out of SASH Western Sydney and Dr. Chris Tan will work from North Ryde, taking referrals.

For more information, visit www.sashvets.com/alexandria



Procedure Estimates

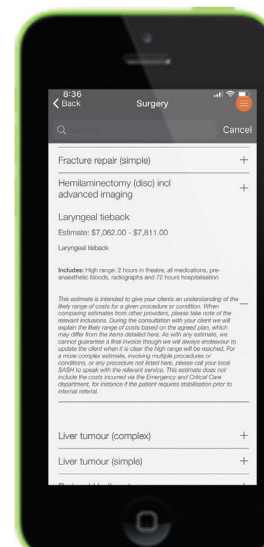


Did you know?

You can access live SASH estimates for common procedures on the rVetLink App.

Download the 'rVetLink' App from the Apple App Store or Google Play.

Select the relevant SASH hospital location and log in using your SASH portal details.



SASH Continuing Education

SASH is committed to providing ongoing quality education to our referring vet and nurse community. Several media are available to suit your needs.

“An Evening with the SASH Team” series

SASH North Ryde recently hosted our first in-person CE event for vets in over two years and we also took the opportunity to celebrate the 15-year anniversary of SASH North Ryde opening its doors. Thank you to all those who attended to meet the SASH Surgery Team for an interactive



evening of quality CE, networking, and panel questions.

Join us in March 2023 to meet and learn from the SASH Cancer Centre and Dermatology teams. Keep an eye out for your invitation and secure your spot early as the Surgery Team event ‘sold out’ in record time.

Live Webinar series

Tune into a free live CE webinar from the comfort of your own home. Featuring a broad range of topics, for vets and nurses, from the country’s largest team of specialists. Register now to receive updates at www.sashvets.com/vetce.

SASH Academy

SASH Academy is your digital on-demand learning platform, with a large free library of topics for both vets and nurses delivered by SASH specialists, and new content added regularly. Learn at your own pace, and receive CE certificates instantly after completion.

Visit <https://academy.sashvets.com/> to sign up and get immediate access.

SASH Academy

**Gain CPD points
anywhere, anytime**



SASH Newsflash January 2023



SASH North Ryde

1 Richardson Place, North Ryde 2113
(02) 9889 0289

- 24/7 Emergency
- Anaesthesia
- Avian & Exotics
- Cancer Centre (Medical, Surgical & Radiation)
- Critical Care
- Dialysis
- Dermatology
- Dentistry
- Diagnostic Imaging
- Feline Radioiodine
- Internal Medicine
- Neurology & Neurosurgery
- Ophthalmology
- Pituitary Centre
- Sports Medicine & Rehabilitation
- Surgery



SASH Western Sydney

1 Rowood Road, Prospect 2148
(02) 8609 9444

- 24/7 Emergency
- Anaesthesia
- Medical Oncology
- Critical Care
- Dermatology
- Diagnostic Imaging
- Internal Medicine
- Sports Medicine & Rehabilitation
- Surgery



SASH Central Coast

2 Bounty Close, Tuggerah, 2259
(02) 4311 1311

- 24/7 Emergency
- Anaesthesia
- Medical Oncology
- Critical Care
- Dermatology
- Diagnostic Imaging
- Internal Medicine
- Ophthalmology
- Sports Medicine & Rehabilitation
- Surgery



SASH Adelaide

99 Rundle Street, Kent Town 5067
(08) 8133 5300

- 24/7 Emergency
- Medical Oncology
- Critical Care
- Dermatology
- Diagnostic Imaging
- Internal Medicine
- Sports Medicine & Rehabilitation
- Surgery

We hope you had a safe and happy holiday season and look forward to continuing our partnership with you and your teams throughout 2023.

The Sash family

www.sashvets.com